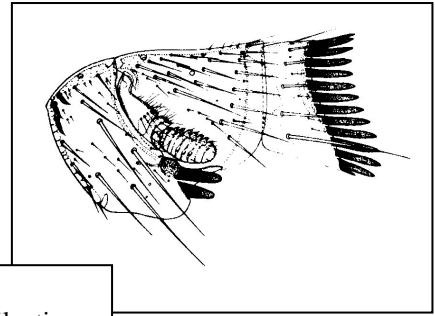
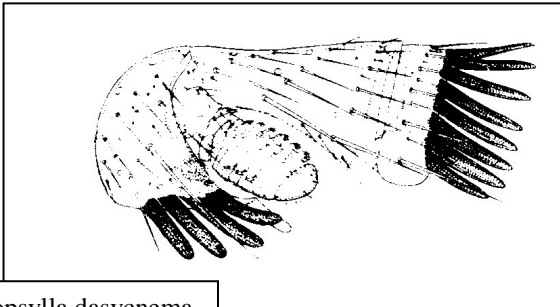


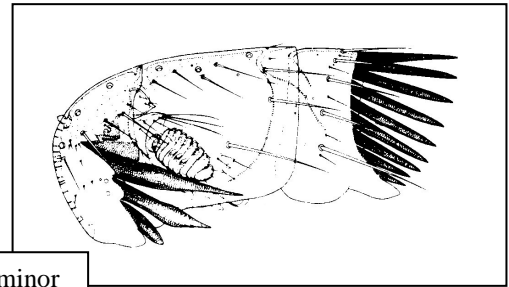
Muizenvlo  
*Ctenophthalmus agyrtes*  
man



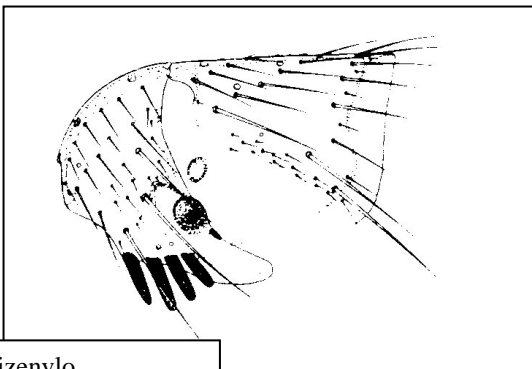
Muizenvlo  
*Peromyscopsylla silvatica*  
man



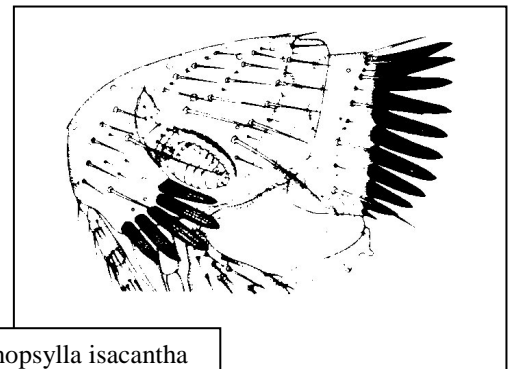
*Doratopsylla dasycnema*  
man



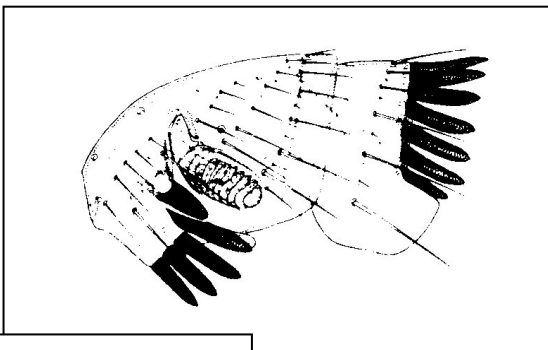
*Palaeopsylla minor*  
wijf



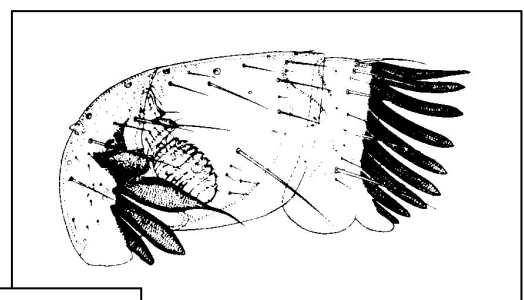
Muizenvlo  
*Typhloceras poppei*  
man



*Rhadinopsylla isacantha*  
wijf



*Rhadinopsylla pentacantha*  
wijf



*Palaepsylla soricis*  
wijf